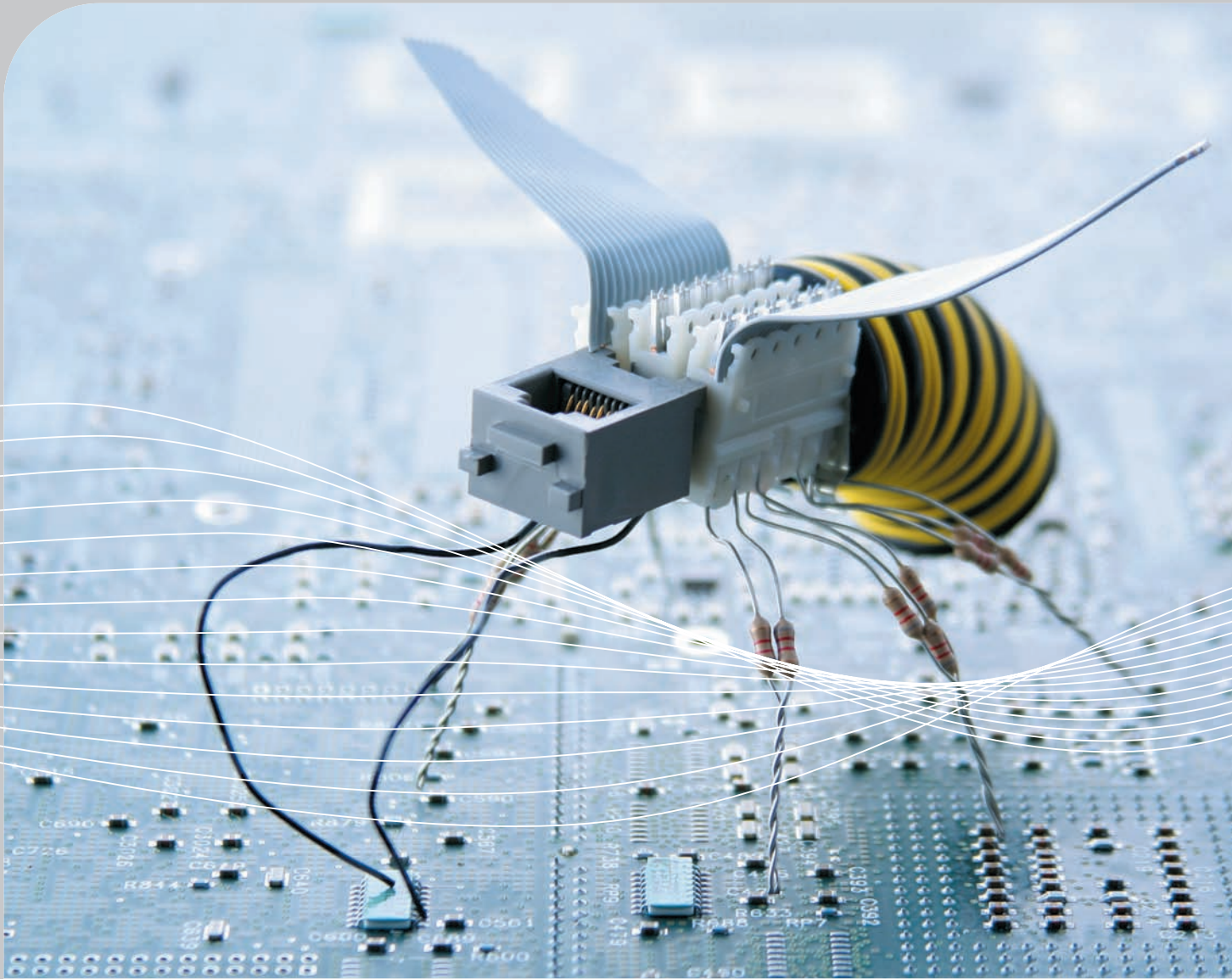


DO YOU KNOW WHAT'S GOING ON
IN YOUR ZIGBEE™ NETWORK?

→ **WE DO!**



MadZine

THE MANAGEMENT TOOL FOR ZIGBEE™ NETWORKS

→ MADZINE™



From industrial to environmental uses: MadZine knows no bounds.

PROBLEM

Thinking about installing a ZigBee wireless network? Already using one for industrial automation, environmental monitoring or other data exchange application?

How can you track the performance of your ZigBee system? How do you detect and diagnose problems?

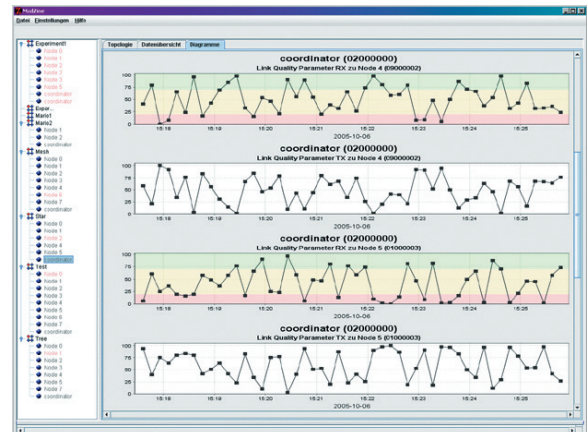
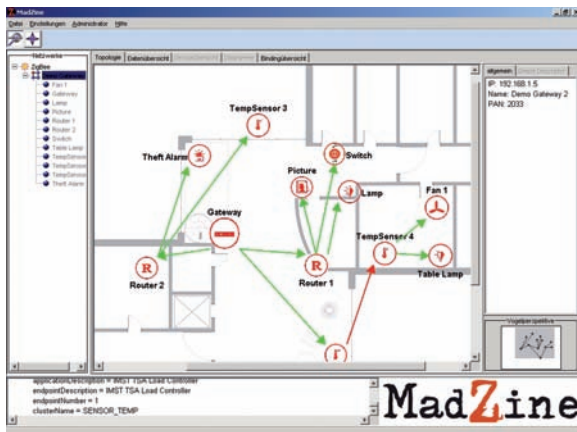
SOLUTION

We can help! We're experts on low-power wireless communications networks. Let us design and set up your ZigBee application. We'll be with you every step of the way.

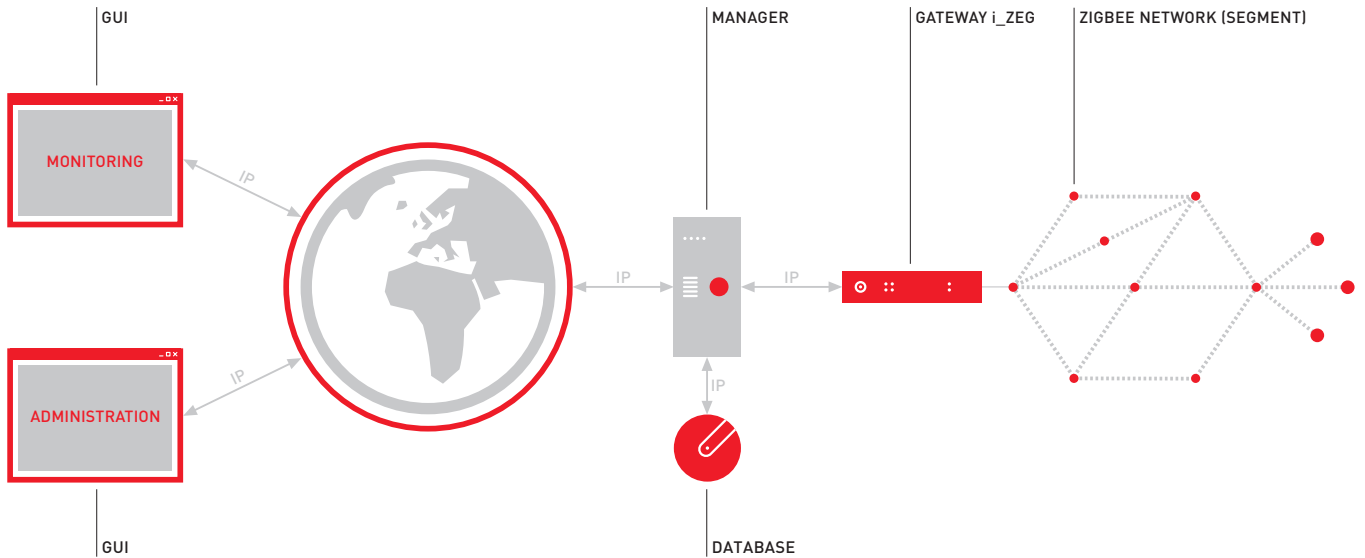
Want to take a closer look at your ZigBee network?

MadZine is the tool that lets you remotely monitor and administer ZigBee networks. All you need is an IP based network to access all the information in clear and userfriendly graphics. You can store the data to create a history and even configure your ZigBee network devices.

Screenshots of the MadZine GUI with the data view on the right side and the topology view on the left side.



MADZINE ARCHITECTURE OVERVIEW



MADZINE MANAGER

The secret is our platform-independent MadZine Manager software, which can use any IP network to reach the MadZine Gateway (i_ZEG). The Gateway allows access to the ZigBee network and can handle multiple network segments simultaneously.

The MadZine Manager generates updates and analyzes events in the ZigBee network. The information is stored in the MadZine Database using a standard SQL interface.

MADZINE GATEWAY – i_ZEG

i_ZEG (ZigBee-to-Ethernet-Gateway) connects the IP and ZigBee networks. The hardware includes a ZigBee networking device and an Ethernet controller to interface with the IP network.

MADZINE GUI

Our MadZine GUI is a Java™ based graphical user interface that displays information from the MadZine Database. Administrators can acquire updates via the GUI.

MADZINE DATABASE

Our SQL-based MadZine Database reports on the ZigBee network's current topology, device status, RF and network performance measures, application description, and application data. All of this information is stored in the database to create a history of application and performance data.

ZIGBEE NETWORK

The ZigBee Network contains the infrastructure of the wireless network, including the ZigBee Coordinator, Router and End devices, along with the ZigBee application software.

IMST is a member of the ZigBee™ Alliance

ZigBee is a trademark of the ZigBee Alliance.
MadZine is a trademark of IMST GmbH.



WHO WE ARE

IMST GmbH provides radio communication solutions for mobile applications, industrial automation, and medical technologies. Our clients count on us for comprehensive technology solutions.

The wireless network team at IMST designs and implements low-power wireless networks of all sizes, from single devices to the most complex. We also offer in-house R&TTE compliance testing facilities.

IMST.Solutions: Radio System Engineering

IMST.Components: From IC to Antenna

IMST.Products: Advanced Design Tools

IMST.Services: Test & Approval, EMC, SAR, RF, Antennas

COLLABORATORS



IMST GmbH

Carl-Friedrich-Gauss-Str. 2
47475 Kamp-Lintfort

T +49-2842-981-200
F +49-2842-981-299
E madzine@imst.de
I www.imst.de

